


[64-bit Vista or Windows 7 Installation of ViperBoard](#) [Follow Carefully!](#)

This installation process applies if you have 64 bit Vista or Windows 7. If you think you have 64-bit Vista or Windows 7 but are not sure then:

- a) Open System by clicking the **Start** button , clicking **Control Panel**, clicking **System and Maintenance**, and then clicking **System**.
- b) Under **System**, you can view the system type.

If you have 64 bit Vista or Windows 7 then proceed with this installation instruction. Otherwise, proceed with Vista 32-bit installation - also available from our Web page.


Step 1:

Open the Windows Device Manager and remove all previous drivers for ViperBoard. This is of course not needed if you have not installed ViperBoard before. Old versions may be located as a libusb-win32 device.

Step 2:

Copy the latest device driver binary package (libusb-win32-bin-1.2.5.0.zip) from our Web page.

Windows Vista (64 Bit) & Windows 7

Package	Version	Key features
Windows Vista (64 Bit) and Windows 7 Installation of ViperBoard (pdf) (read first!)  libusb v.1.2.5.0 Windows Installation (zip) ViperBoard Windows Vista (64 Bit) and Windows 7 Installation 1.1.6 (zip)	1.1.6	Updates to EEPROM Prog App
Windows Vista (64 Bit) and Windows 7 Installation of ViperBoard (pdf) (read first!) libusb v.1.2.0.0 Windows Installation (zip) ViperBoard Windows Vista (64 Bit) and Windows 7 Installation 1.1.5 (zip)	1.1.5	Latency Improvements (boards after June 1 2010)

Step 3:

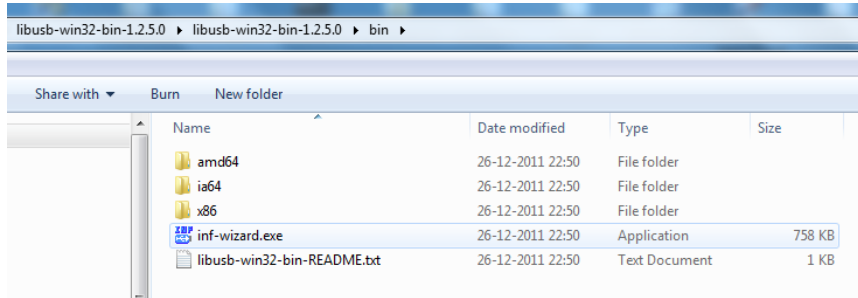
Extract it to a temporary directory.

Step 4:

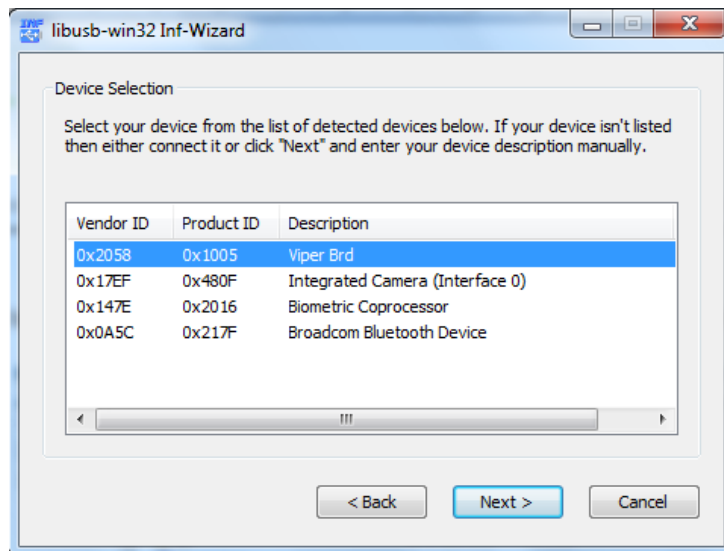
Connect your ViperBoard.

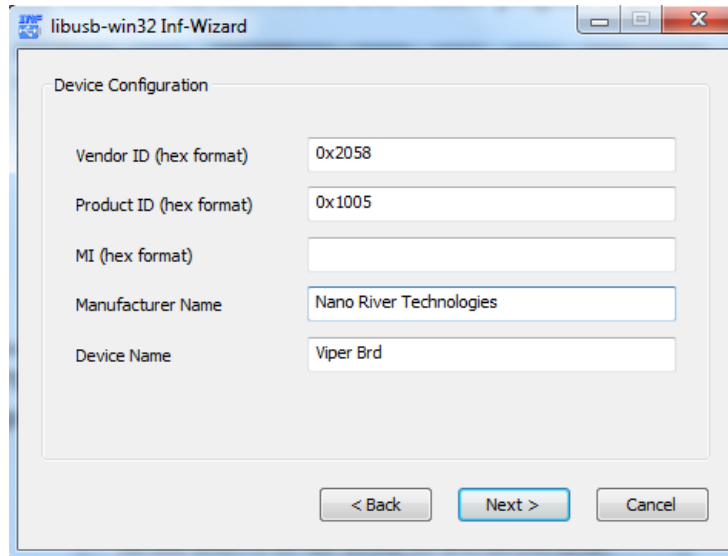
Step 5:

Navigate to the bin/ directory and then run the INF-Wizard program to generate the INF file.



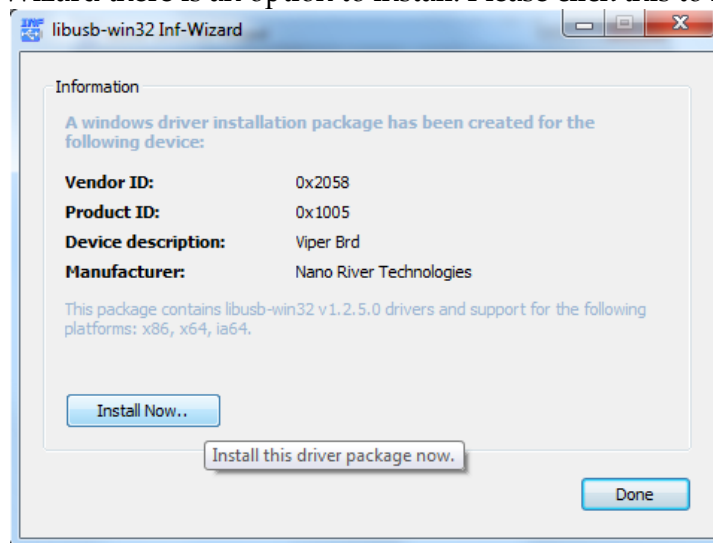
To do this you will see other devices including ViperBoard. You should see the ViperBoard is VID=2058 and PID=1005. Select ViperBoard and then you need to enter the Manufacturer as "Nano River Technologies".





Step 6:

From within the INF-Wizard there is an option to install. Please click this to install.



Step 7:

Disconnect ViperBoard and re-connect. Check to see ViperBoard is installed correctly in "Control Panel\Hardware and Sound\Devices and Printers" in Windows 7.

Step 8:

Install the ViperBoard example applications and driver by double clicking on the ViperBoard Installer 1.1.6 (ViperBoardInstaller_1.1.6.zip). Follow all defaults until the driver is installed. This will include installing the Visual C redistribution pack - so that you can run .NET applications.

Windows Vista (64 Bit) & Windows 7

Package	Version	Key features
Windows Vista (64 Bit) and Windows 7 Installation of ViperBoard (pdf) <i>(read first!)</i> libusb v.1.2.5.0 Windows Installation (zip)	1.1.6	Updates to EEPROM Prog App
→ ViperBoard Windows Vista (64 Bit) and Windows 7 Installation 1.1.6 (zip)		
Windows Vista (64 Bit) and Windows 7 Installation of ViperBoard (pdf) <i>(read first!)</i> libusb v.1.2.0.0 Windows Installation (zip) ViperBoard Windows Vista (64 Bit) and Windows 7 Installation 1.1.5 (zip)	1.1.5	Latency Improvements (boards after June 1 2010)

Step 9: ViperBoard Programs

ViperBoard software examples and documentation should now all be installed. Go the User Manual, API Specification and Application Examples to start using ViperBoard.