

Windows 7, Windows 8 and Vista Installation Instructions for TigerBoard


Step 1:

Open the Windows Device Manager and remove all previous drivers for TigerBoard. This is of course not needed if you have not installed TigerBoard before. Old versions may be located as a libusb-win32 device.

Step 2:

Copy the latest device driver binary package (libusb-win32-bin-1.2.5.0.zip) from our Web page.

Windows Vista, Windows 7 and Windows 8

Package	Version	Key features
 Windows 7 Installation of TigerBoard (pdf) <i>(read first!)</i>	1.0.2	Full Install
libusb v.1.2.5.0 Windows Installation (zip)		
TigerBoard Windows 7 Installation 1.0.2 (zip)		

Step 3:

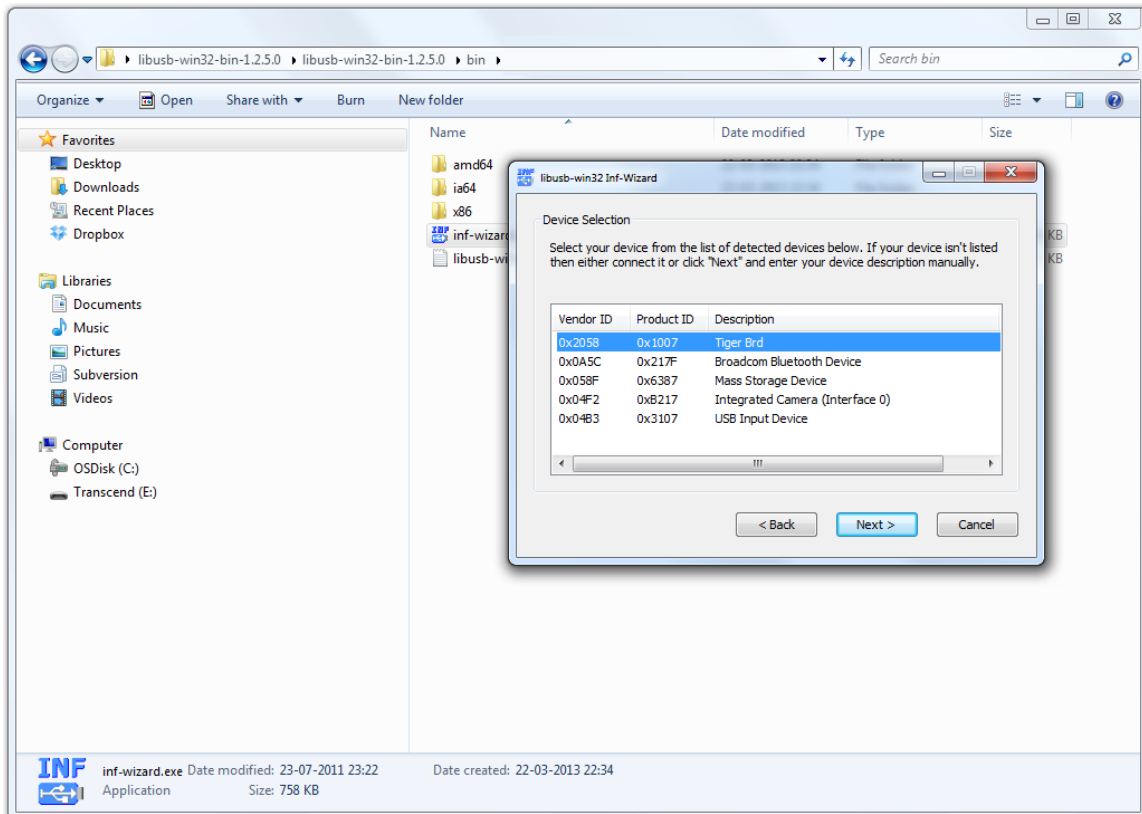
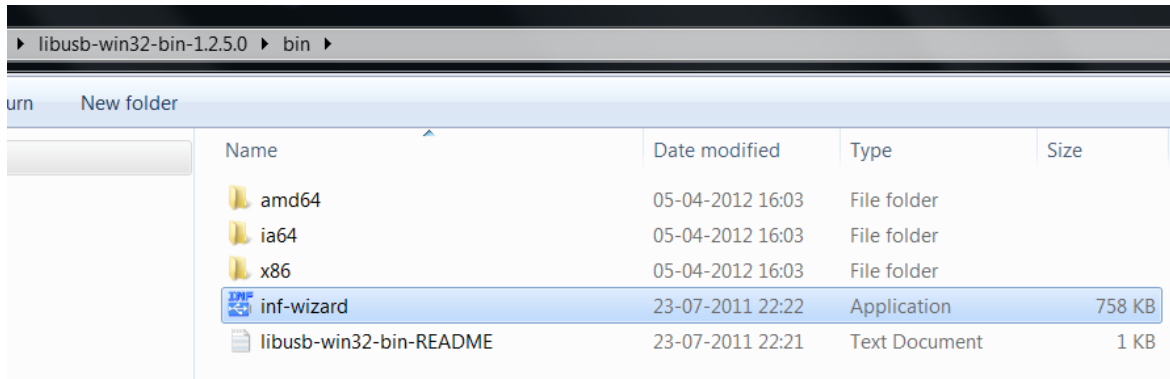
Extract it to a temporary directory.

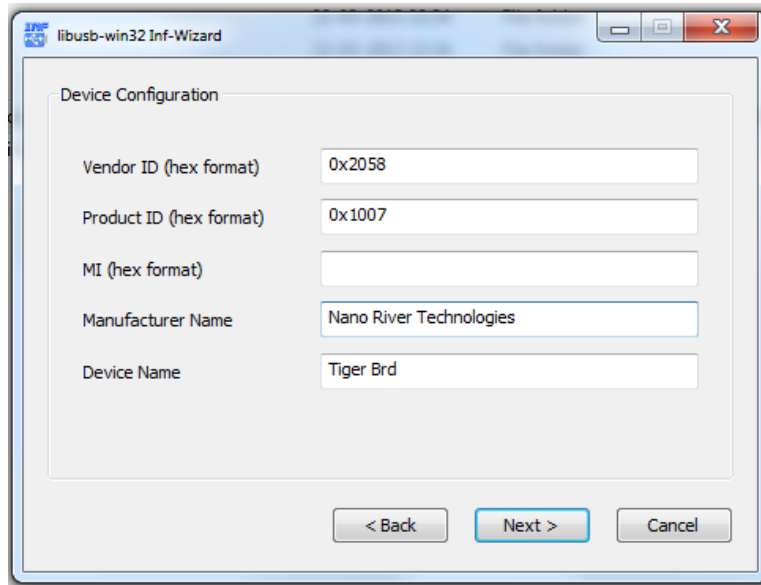
Step 4:

Connect your TigerBoard.

Step 5:

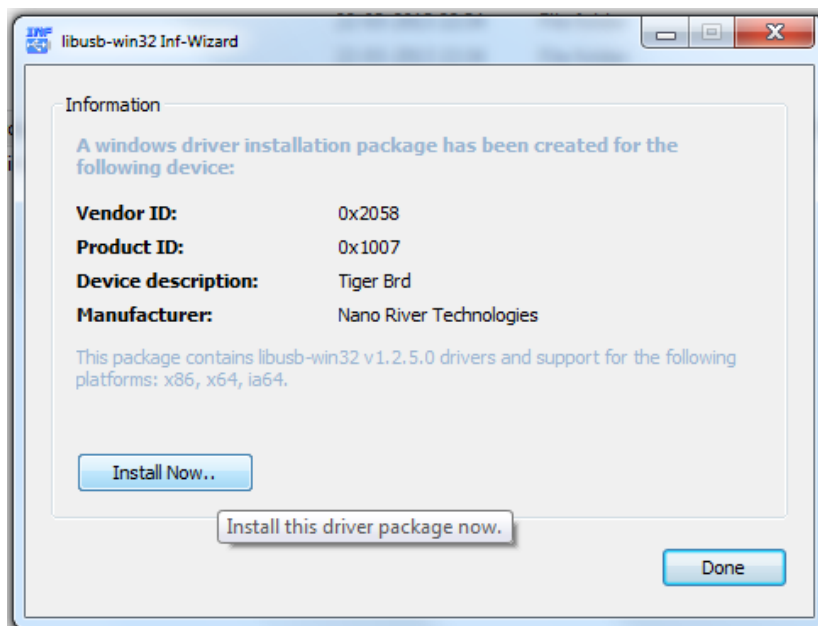
Navigate to the bin/ directory and then run the INF-Wizard program to generate the INF file. To do this you will see other devices including TigerBoard. You should see the TigerBoard is VID=2058 and PID=1007. Select TigerBoard and then you need to enter the Manufacturer as "Nano River Technologies".





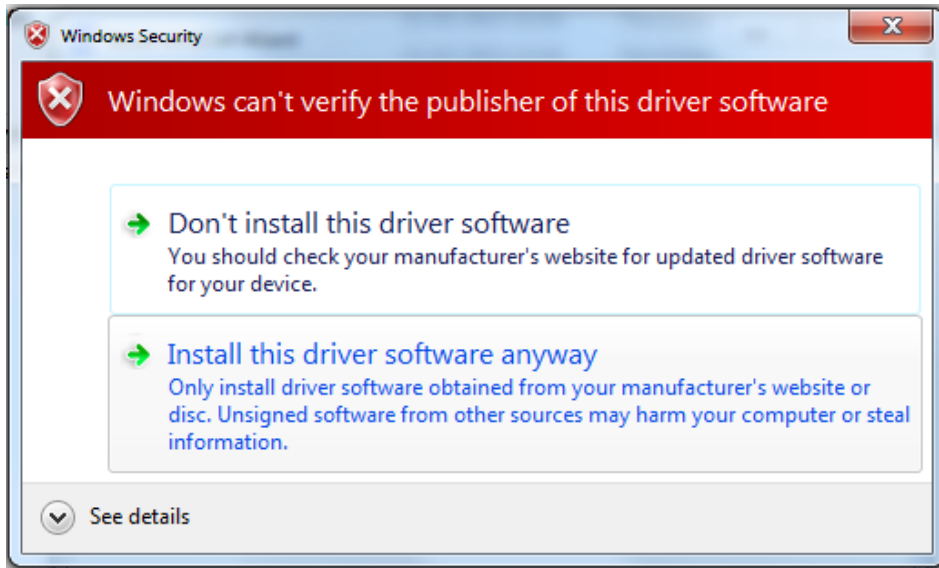
Step 6:

From within the INF-Wizard there is an option to install. Please click this to install.

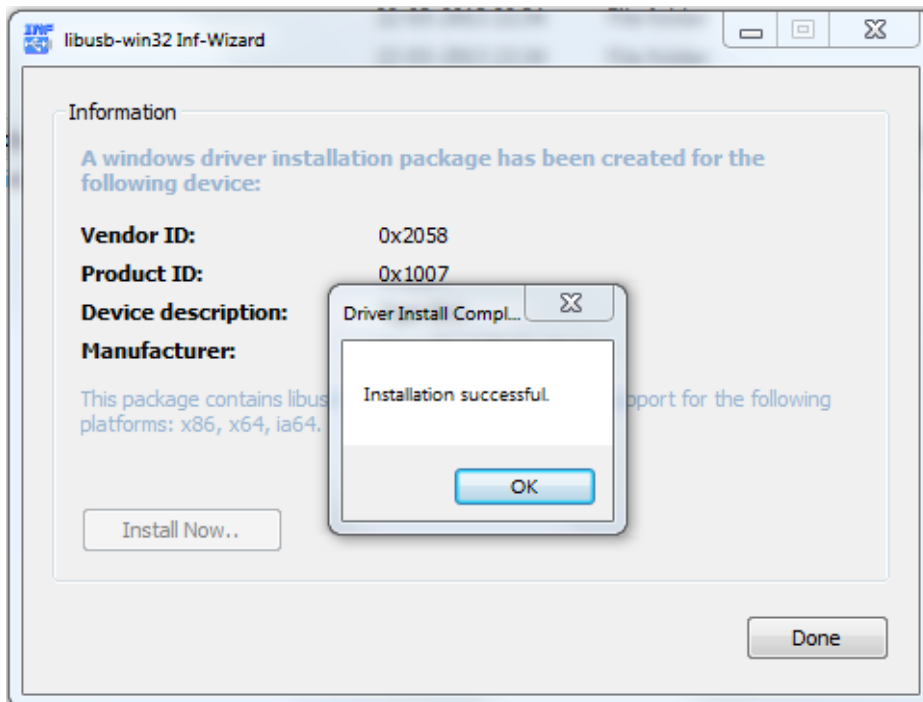


Step 8:

It will warn about the publisher of the software but choose install anyway.




So eventually the driver is installed and complete.

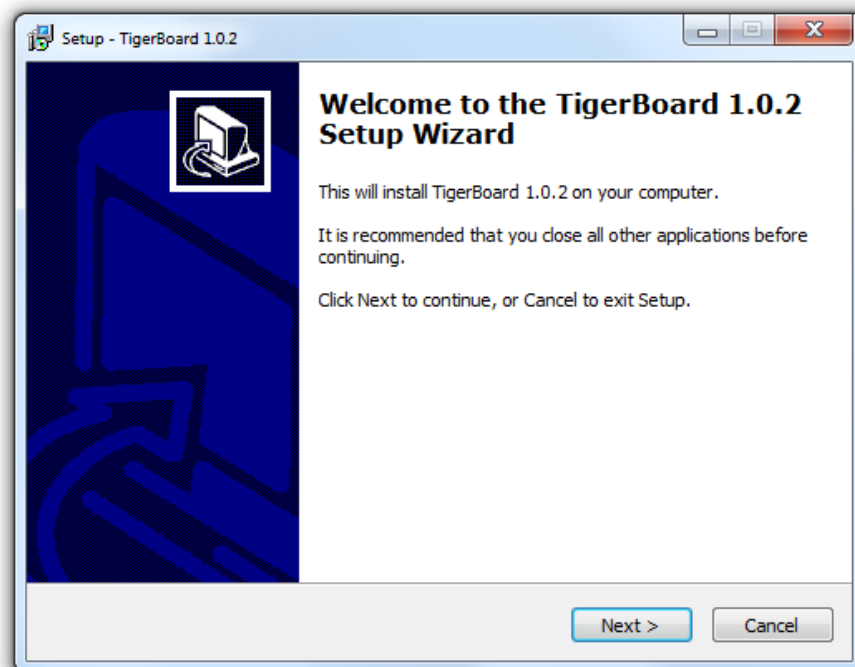


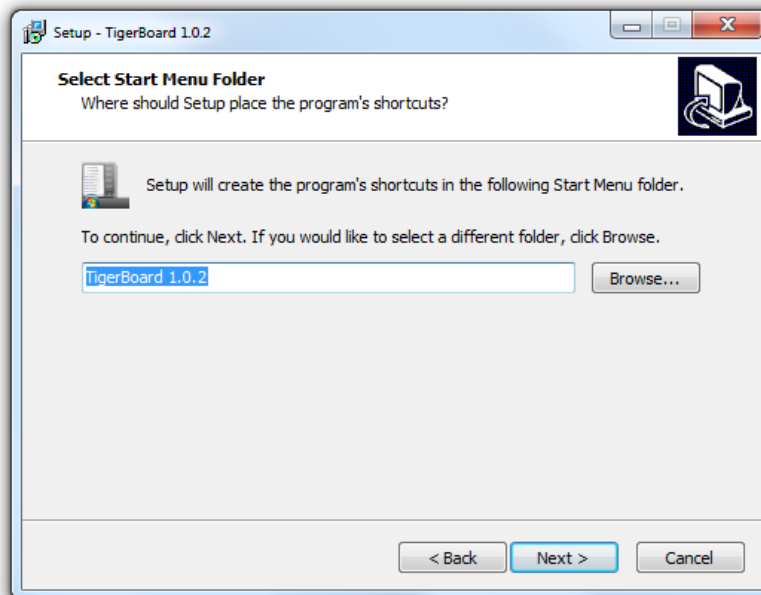
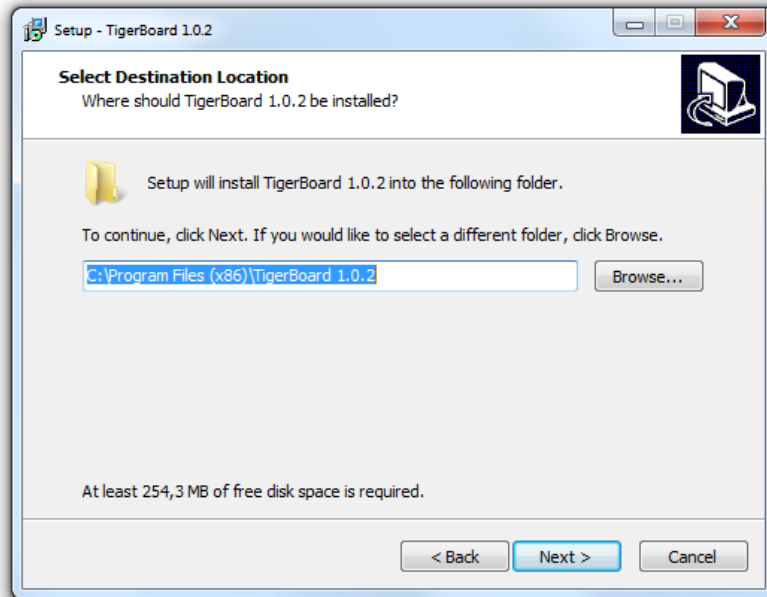
Step 9:

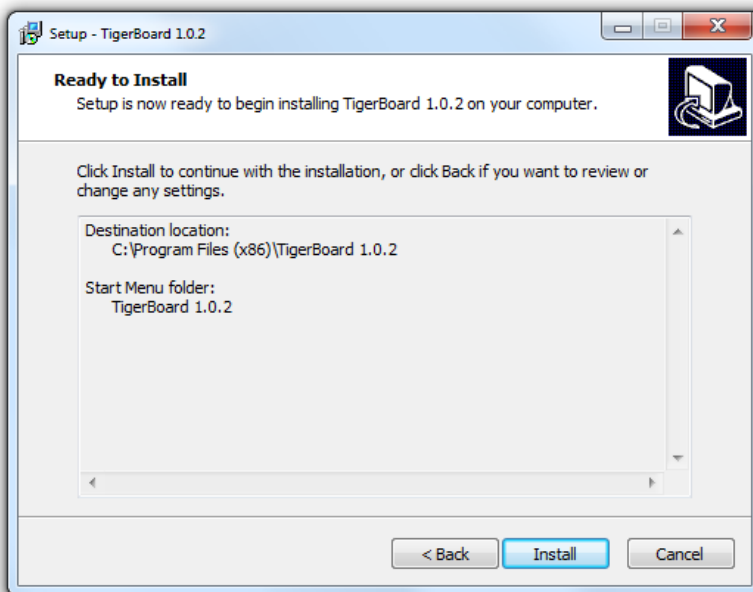
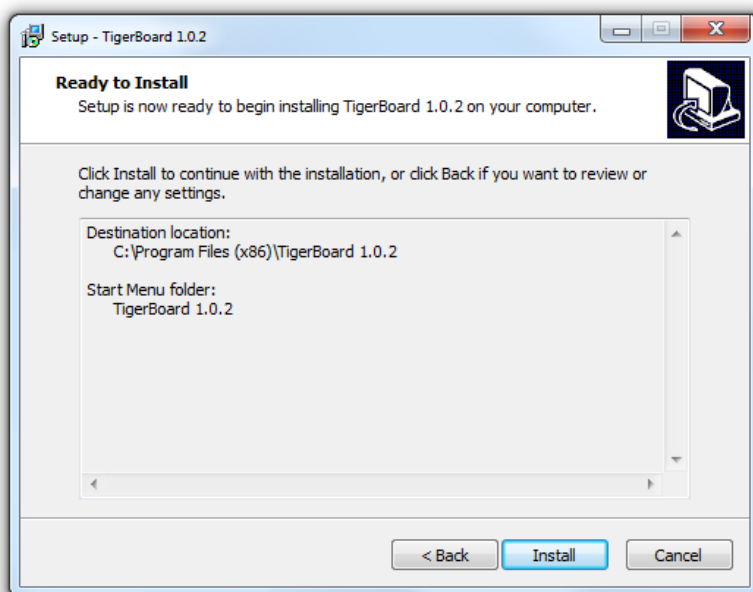
Next you will need to install the TigerBoard application examples. Just choose the default settings.

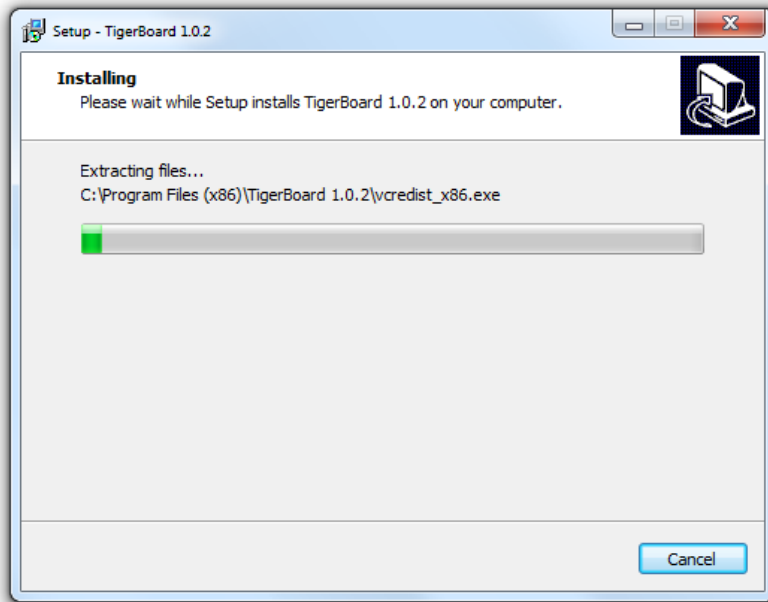
Windows Vista, Windows 7 and Windows 8

Package	Version	Key features
Windows 7 Installation of TigerBoard (pdf) <i>(read first!)</i>	1.0.2	Full Install
libusb v.1.2.5.0 Windows Installation (zip)		
 TigerBoard Windows 7 Installation 1.0.2 (zip)		



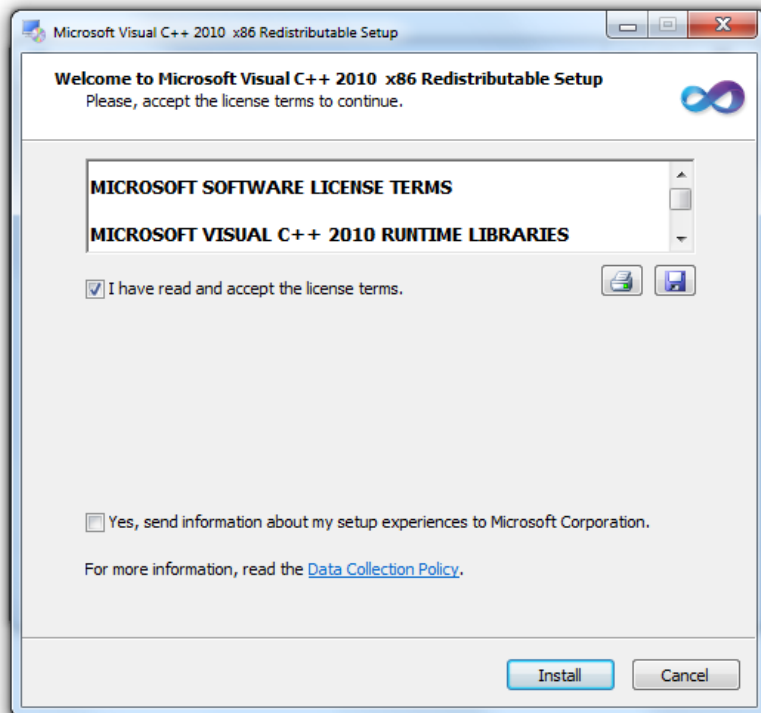


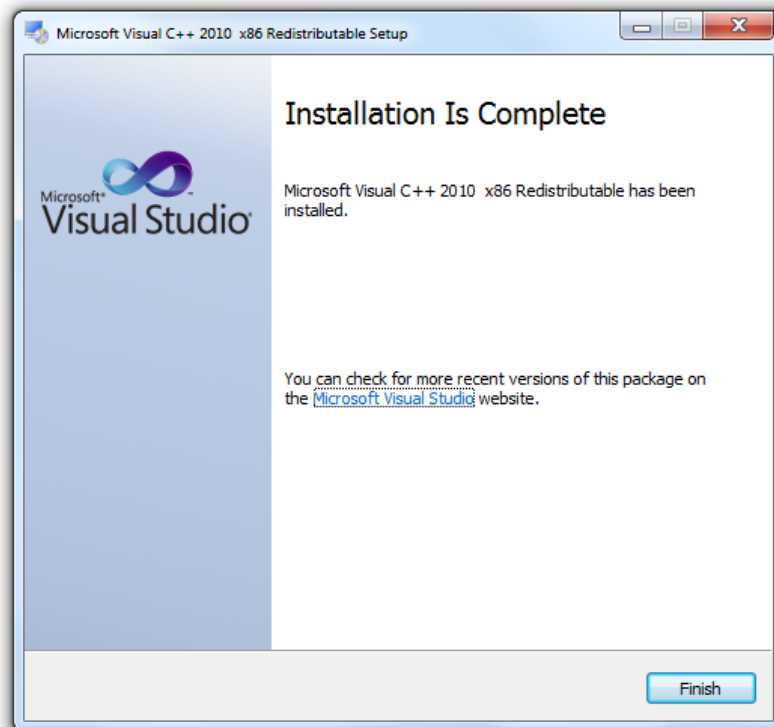
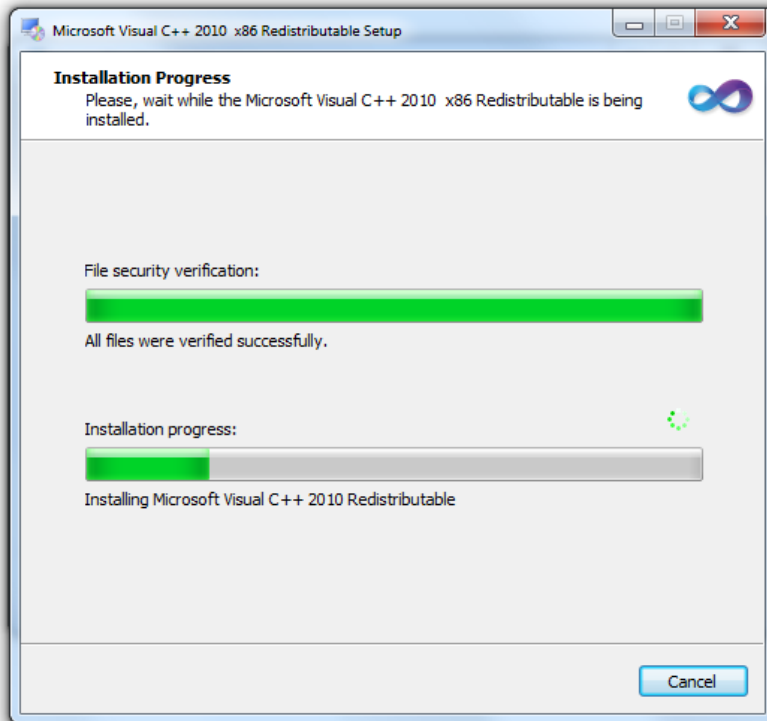




Step 10:

It will then attempt to install the redistribution pack for Visual C++ 2010. Please read and accept the license terms.





Step 11:

You will then be complete and able to connect your board and run the example applications.

