



## Windows XP Installation of TigerBoard

### **1.1. Pre-requisites**

Windows XP should have service pack SP3. If you do not have this please upgrade from the web or through this link:


<https://dl.dropbox.com/u/14675298/WindowsXP-KB936929-SP3-x86-ENU.exe>

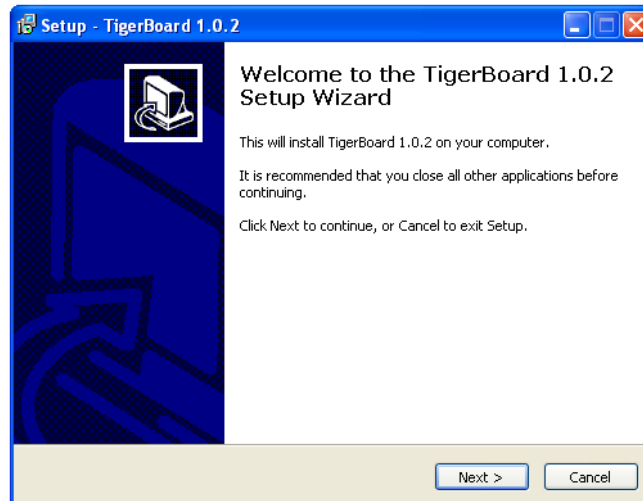
## 1.2. TigerBoard Installer

The TigerBoard installer activates from the software download page available from:

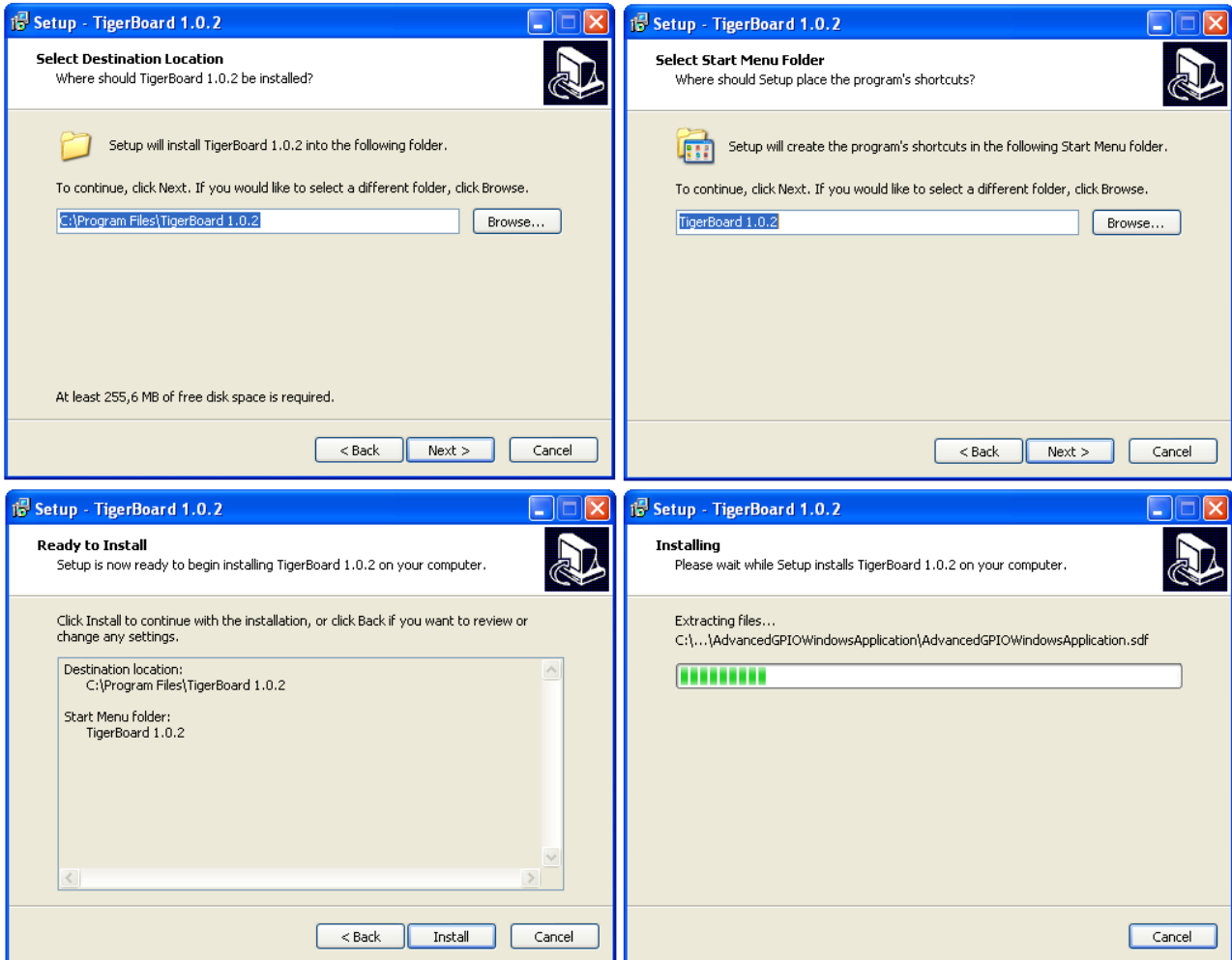
[www.nanorivertech.com/tigerboard-software.html](http://www.nanorivertech.com/tigerboard-software.html)

### Windows XP / Windows 2000

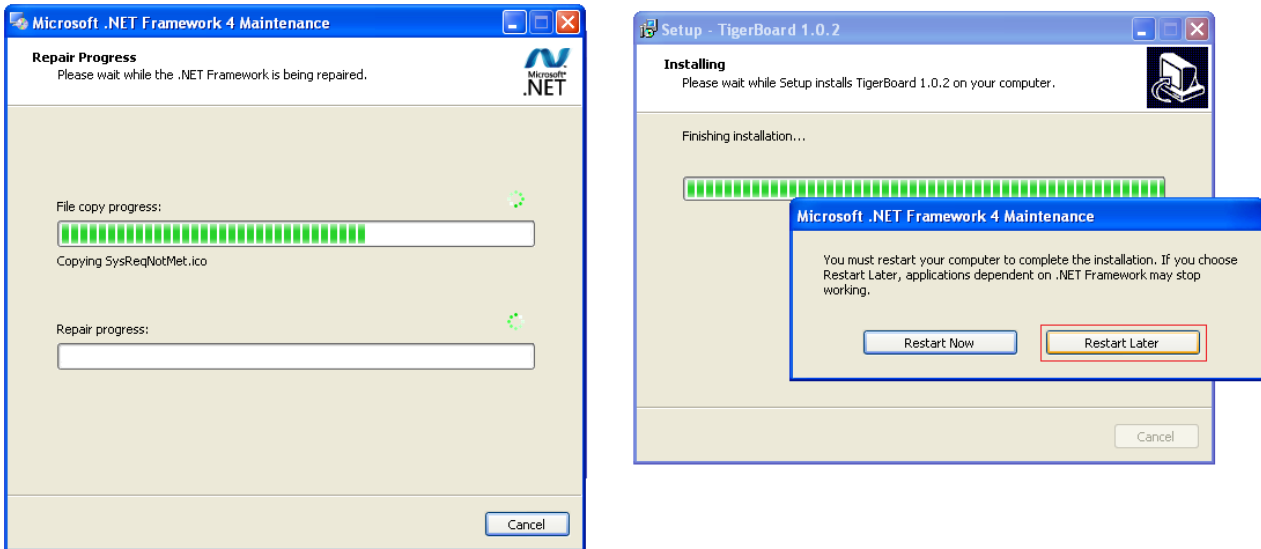
Package	Version	Key features
<a href="#">Windows XP Installation of TigerBoard (pdf) <i>(read first!)</i></a>	1.0.2	Full Install
 <a href="#">TigerBoard Windows XP Installation 1.0.2 (zip)</a>		



The installer starts by downloading all TigerBoard documentation and software examples.

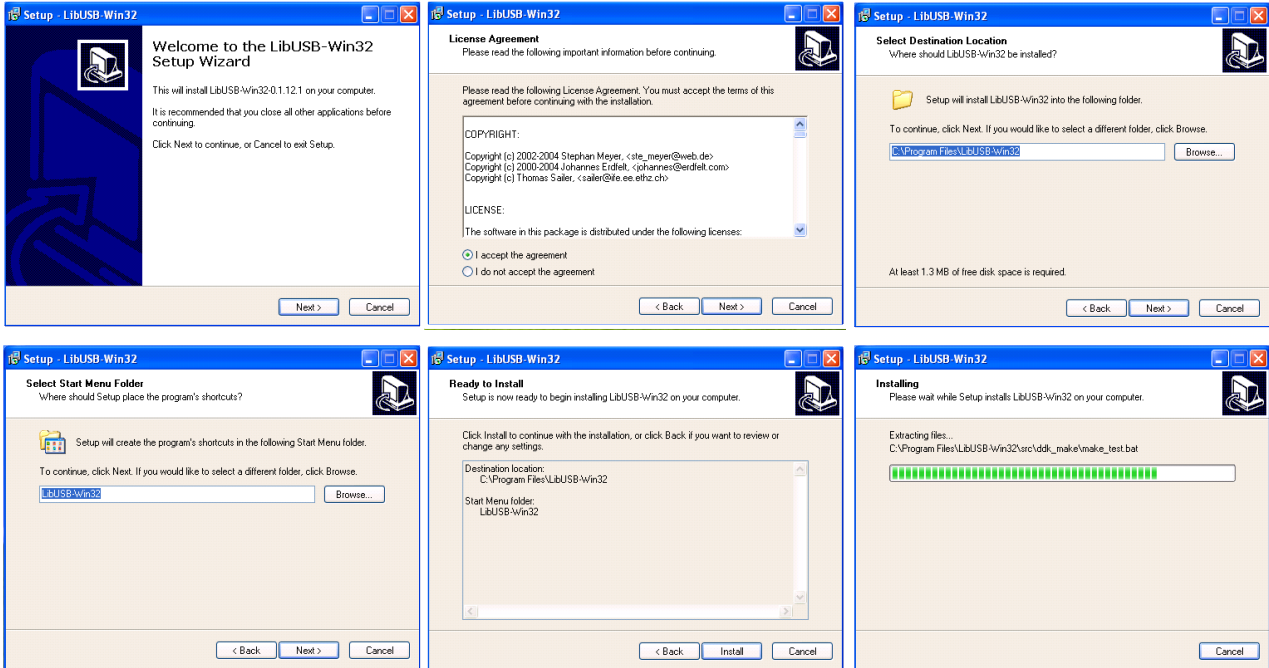


It will then attempt to install .NET version 4. When it is finished and asks about re-starting Windows – please choose to continue and not restart:

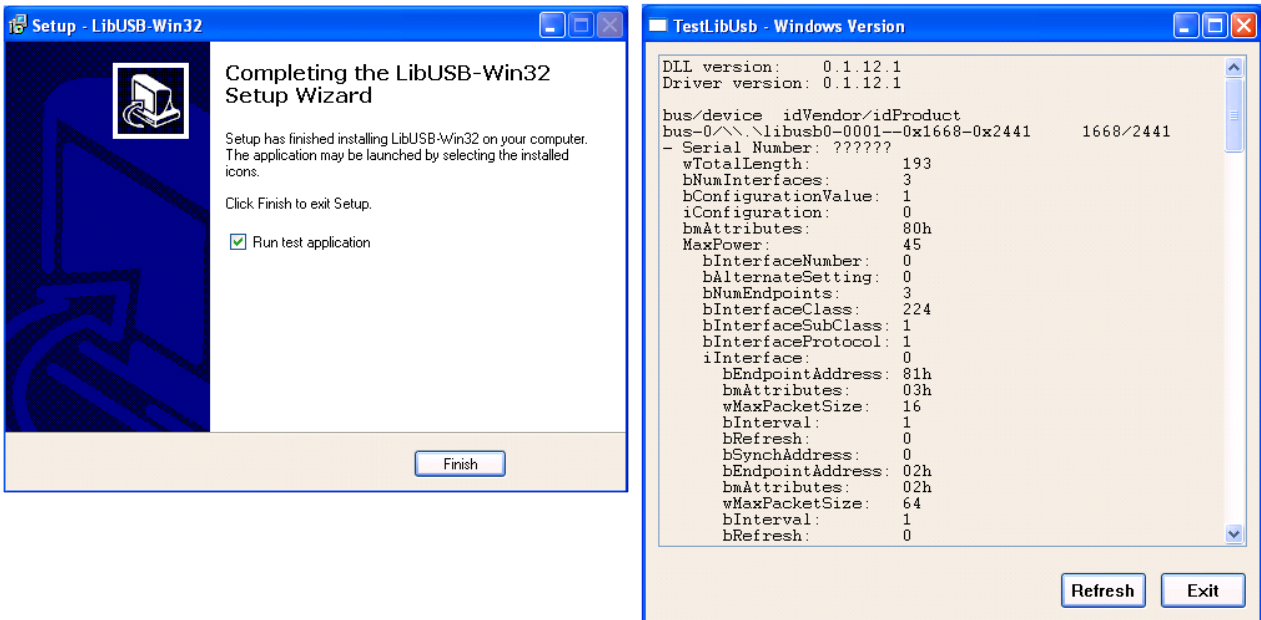


To run the applications without MicroSoft Visual C++ installed the Microsoft Visual C++ 2010 redistribution pack is required. This is installed automatically next. Allow all default directories and file names.

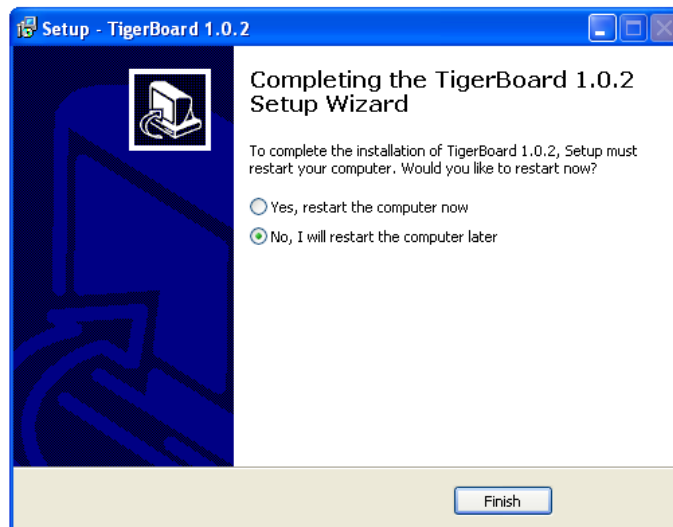
Next the open source LibUSB-Win USB driver is installed. Allow all default directories and file names.



At the conclusion of the LibUSB-Win USB driver installation there will be the opportunity to run a test program to ensure it installed properly. Running this is optional.



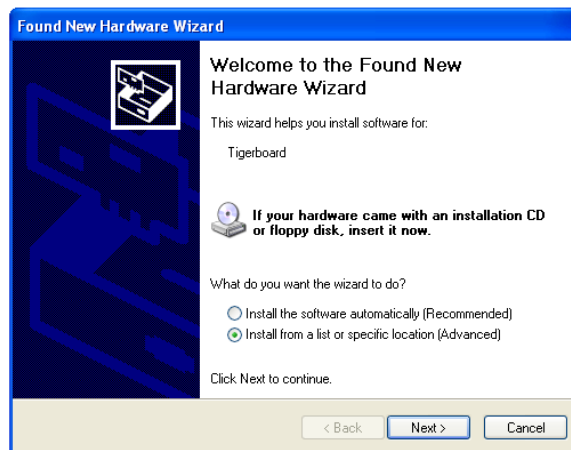
At the conclusion you will be asked to restart Windows again. This is not really needed.



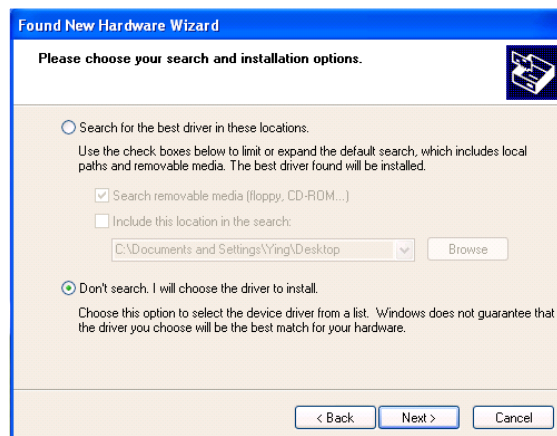
### 1.3. Plugging in the TigerBoard

When the driver is installed and the TigerBoard plugged into a USB port for the first time, the "Found New Hardware" wizard will appear.

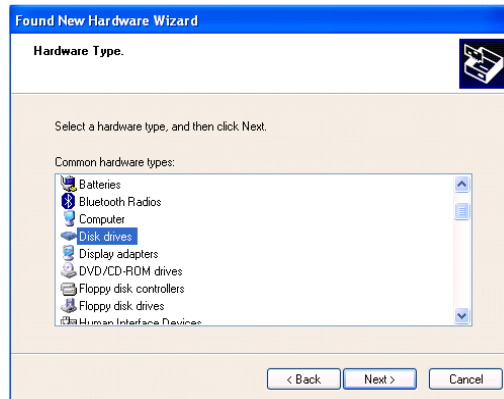
Select "Install from a list or specific location".



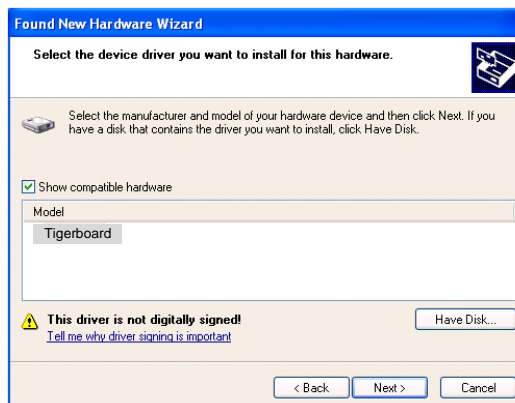
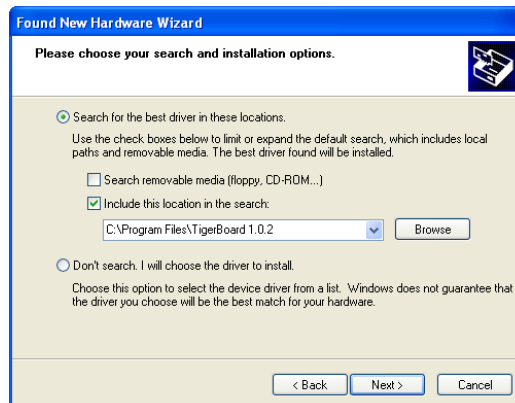
Select "Don't search. I will choose the driver to install".



Navigate to the hard disk.

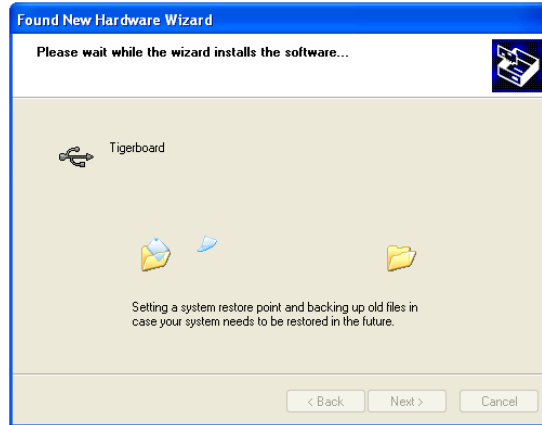


Navigate to the install directory for TigerBoard eg `C:\Program Files\TigerBoardInstaller_1.0.2.`





The Wizard will then find the driver setup file and start to link to the TigerBoard driver.



Installation is then complete. The PC can now talk to a TigerBoard.

