

Windows 7, Windows 8 and Vista Installation Instructions for NR Programmer


Step 1:

Open the Windows Device Manager and remove all previous drivers for NR Programmer. This is of course not needed if you have not installed NR Programmer before. Old versions may be located as a libusb-win32 device.

Step 2:

Copy the latest device driver binary package (libusb-win32-bin-1.2.5.0.zip) from our Web page.

Windows Vista, Windows 7 and Windows 8

Package	Version	Key features
Windows Vista/Win7/Win8 Installation Guide (pdf) <i>(read first!)</i>	1.0.2	
 libusb v.1.2.5.0 Windows Installation (zip)		
NR Programmer Windows Vista/Win7/Win8 Installation 1.0.2 (zip)		

Step 3:

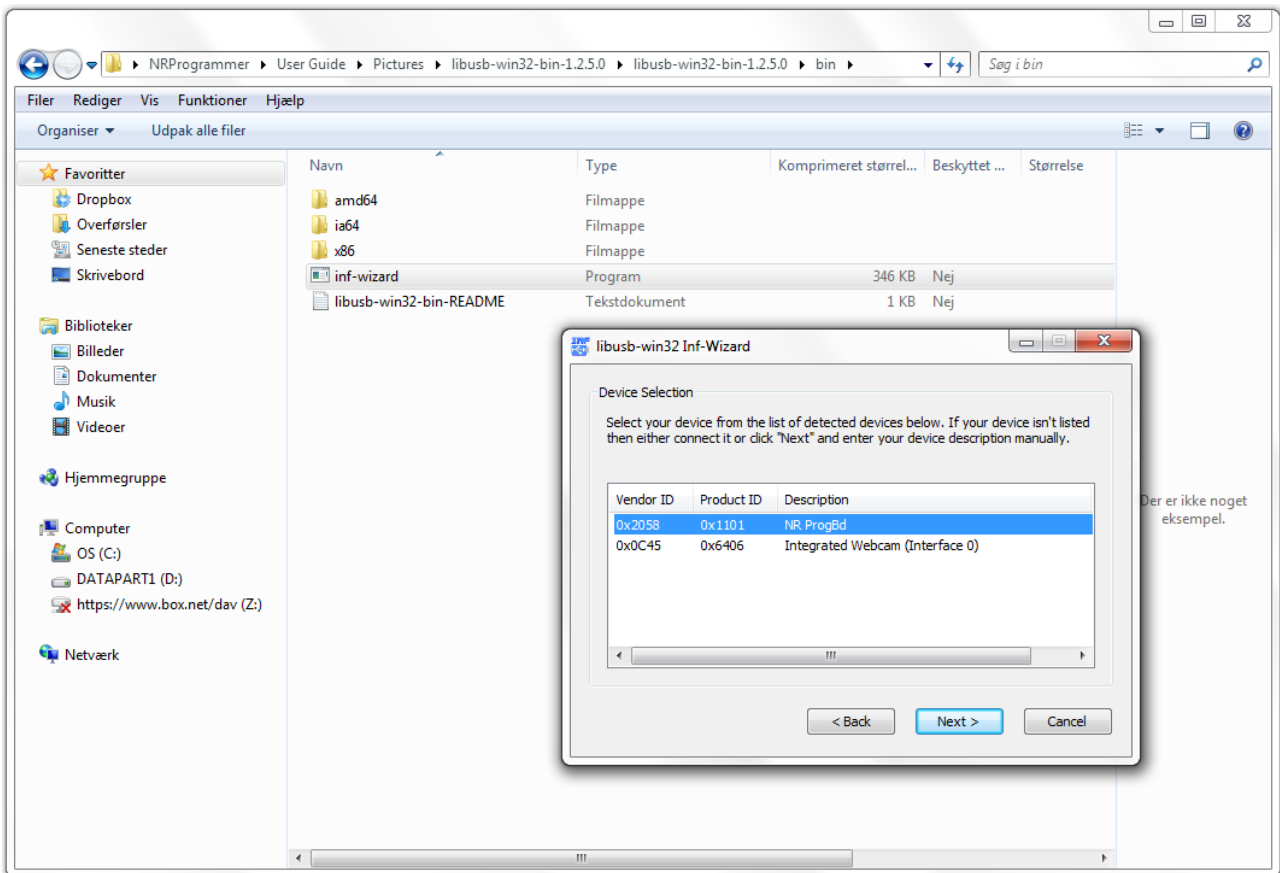
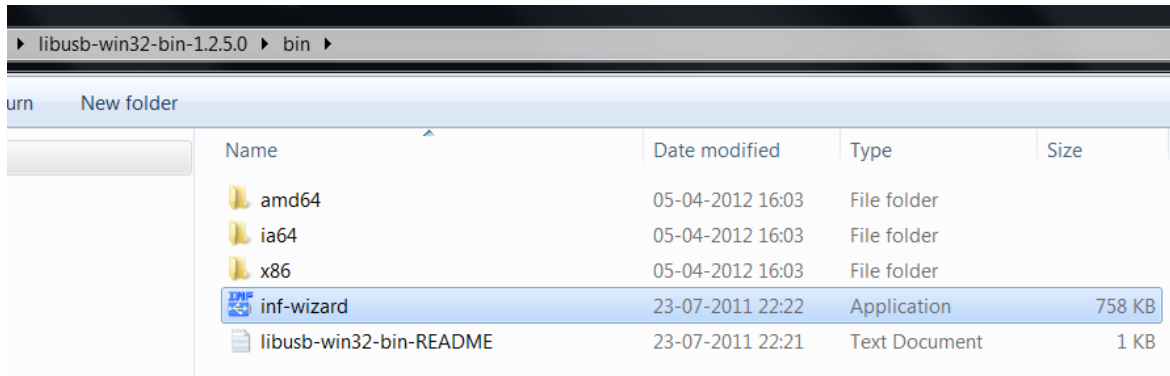
Extract it to a temporary directory.

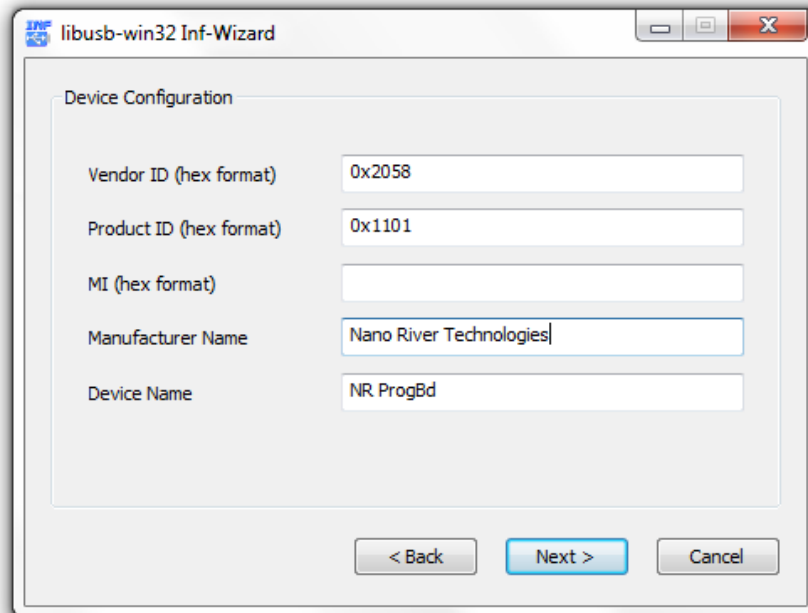
Step 4:

Connect your NR Programmer.

Step 5:

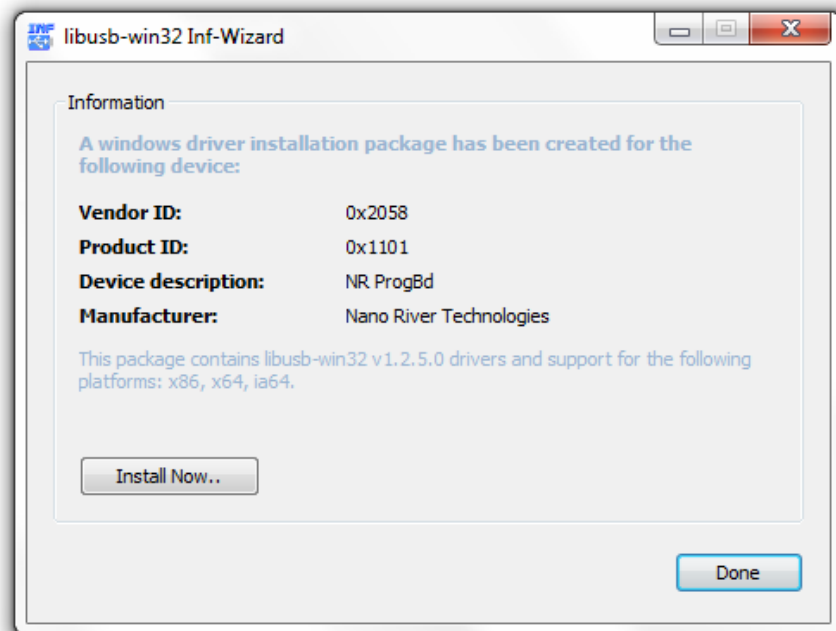
Navigate to the bin/ directory and then run the INF-Wizard program to generate the INF file. To do this you will see other devices including NR Programmer. You should see the NR Programmer is VID=2058 and PID=1101. Select NR Programmer and then you need to enter the Manufacturer as "Nano River Technologies".





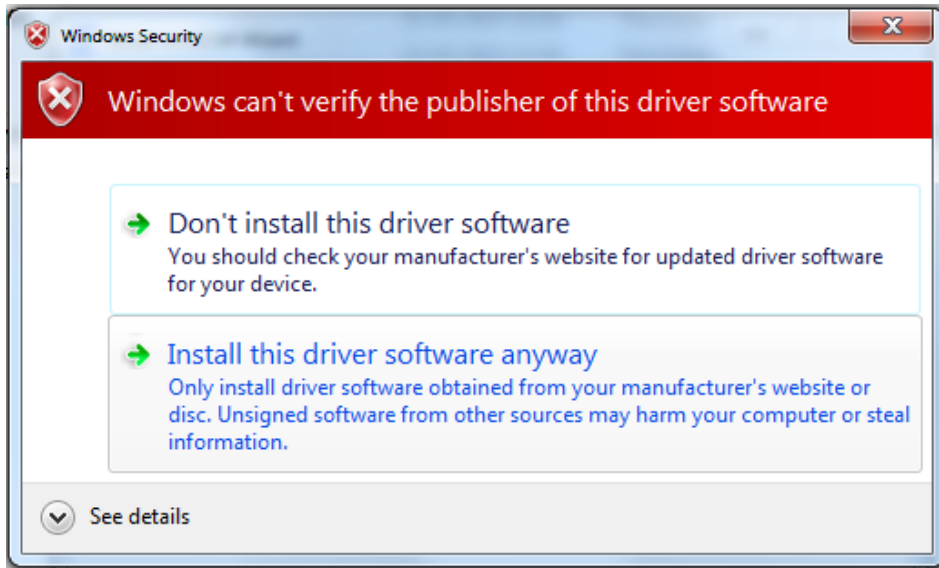
Step 6:

From within the INF-Wizard there is an option to install. Please click this to install.

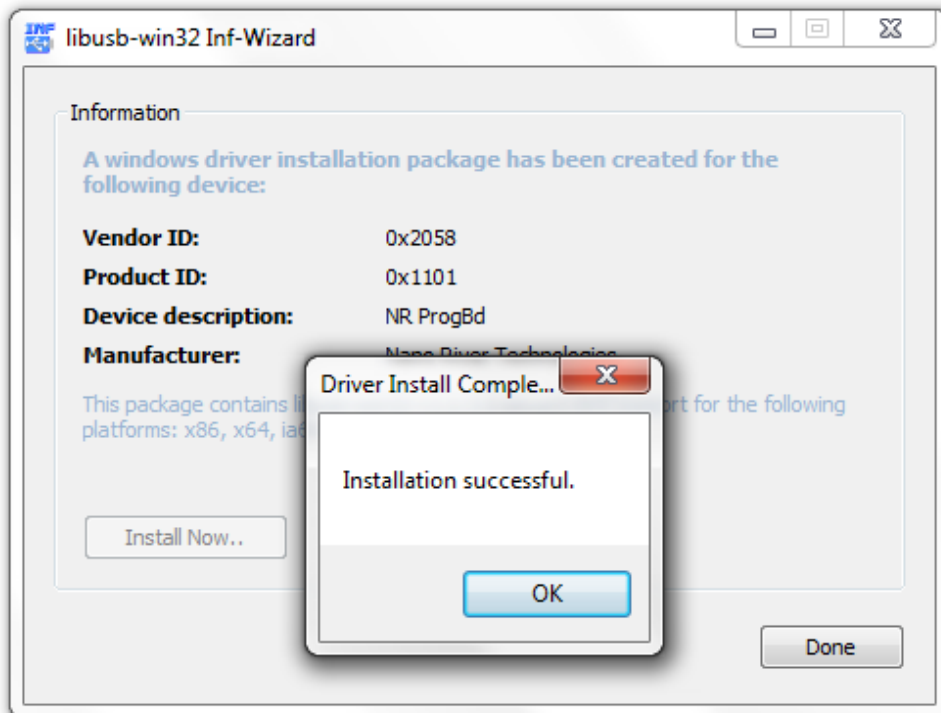


Step 8:

It will warn about the publisher of the software but choose install anyway.




So eventually the driver is installed and complete.

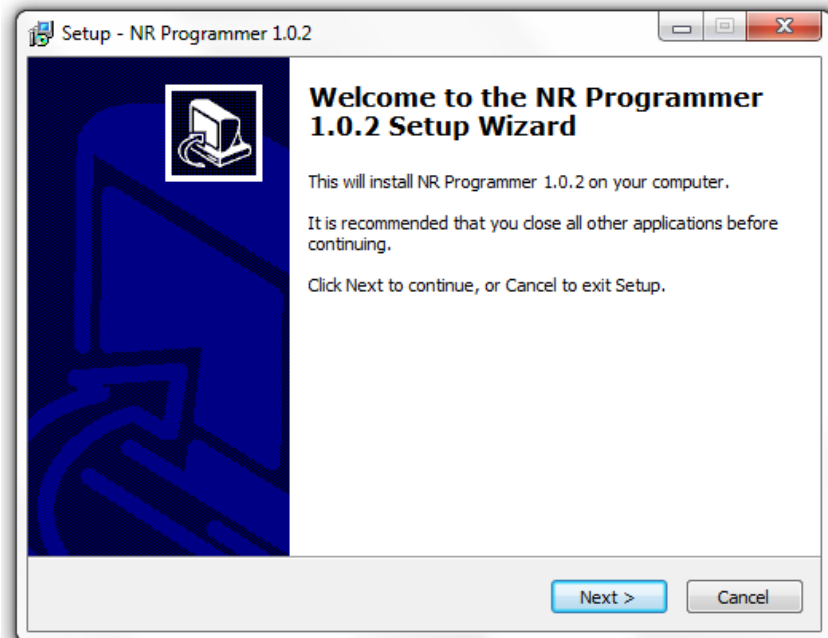


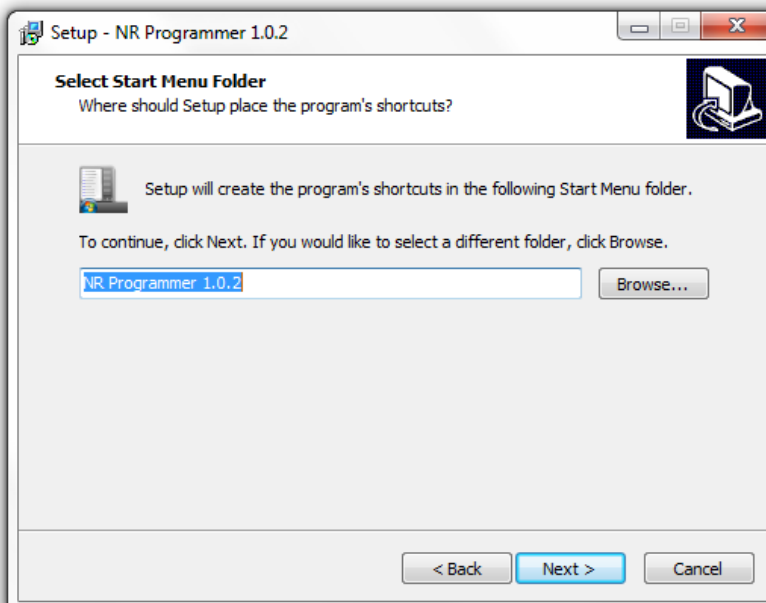
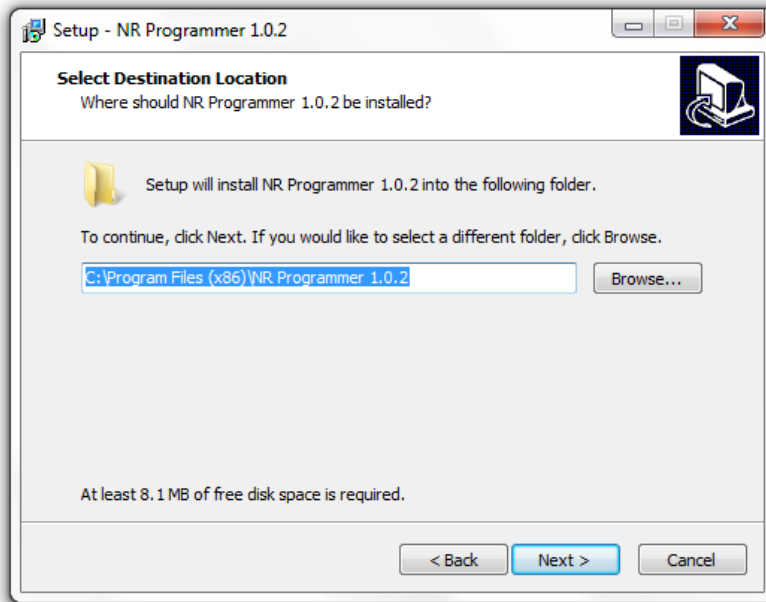
Step 9:

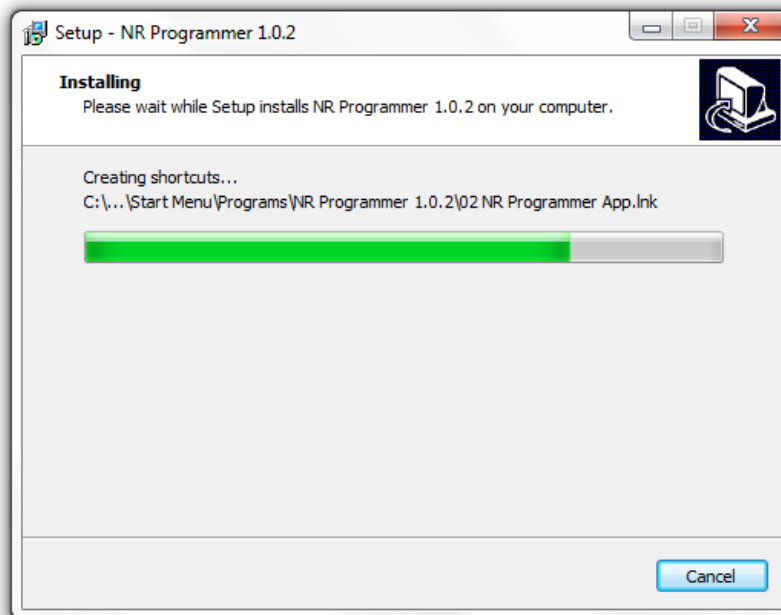
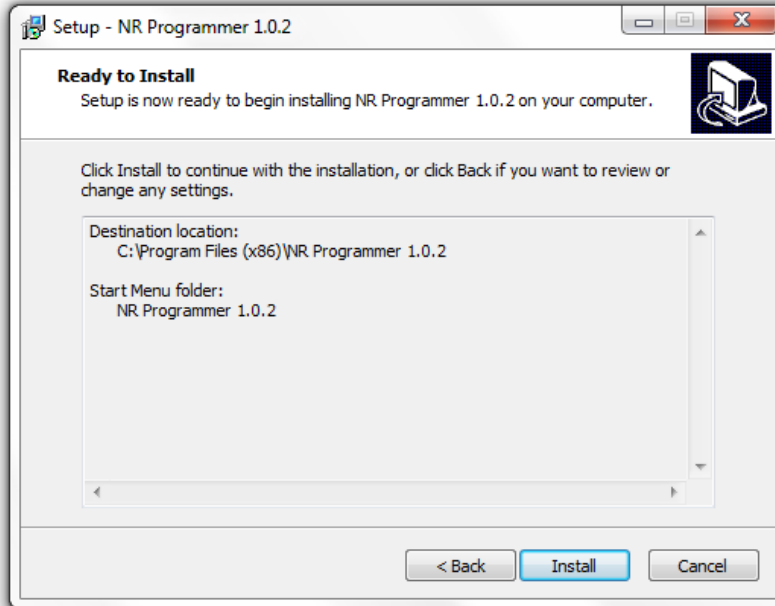
Next you will need to install the NR Programmer application. Just choose the default settings.

Windows Vista, Windows 7 and Windows 8

Package	Version	Key features
Windows Vista/Win7/Win8 Installation Guide (pdf) <i>(read first!)</i>	1.0.2	
libusb v.1.2.5.0 Windows Installation (zip)		
 NR Programmer Windows Vista/Win7/Win8 Installation 1.0.2 (zip)		







Step 10:

You will then be complete and able to connect your board and run the application from the Windows Start Menu.

