


## [Windows XP Installation of NR Programmer](#)

### 1.1. NR Programmer Installer

The NR Programmer installer activates from the software download page available from:

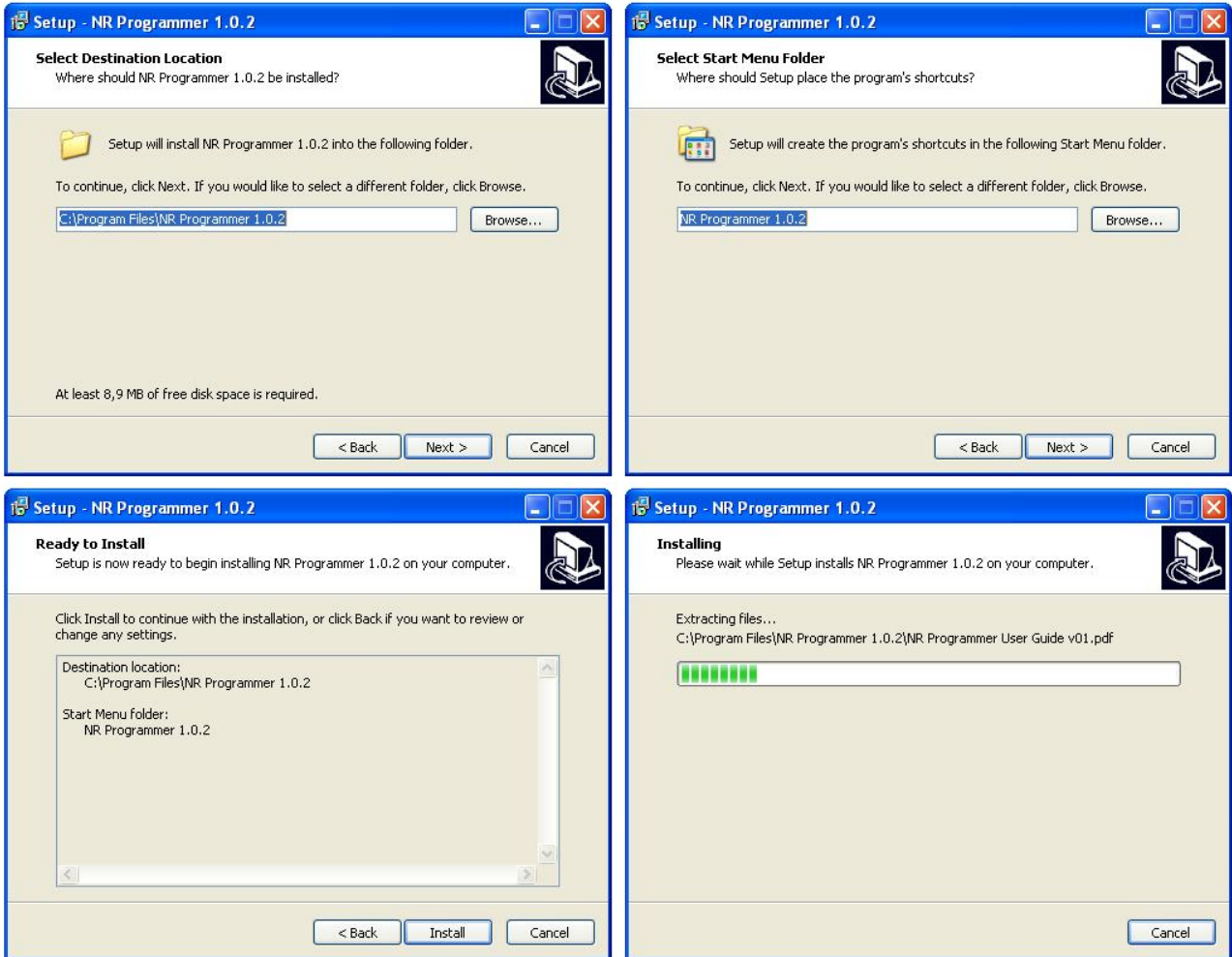
[www.nanorivertech.com/nrprogrammer-software.html](http://www.nanorivertech.com/nrprogrammer-software.html)

#### Windows XP / Windows 2000

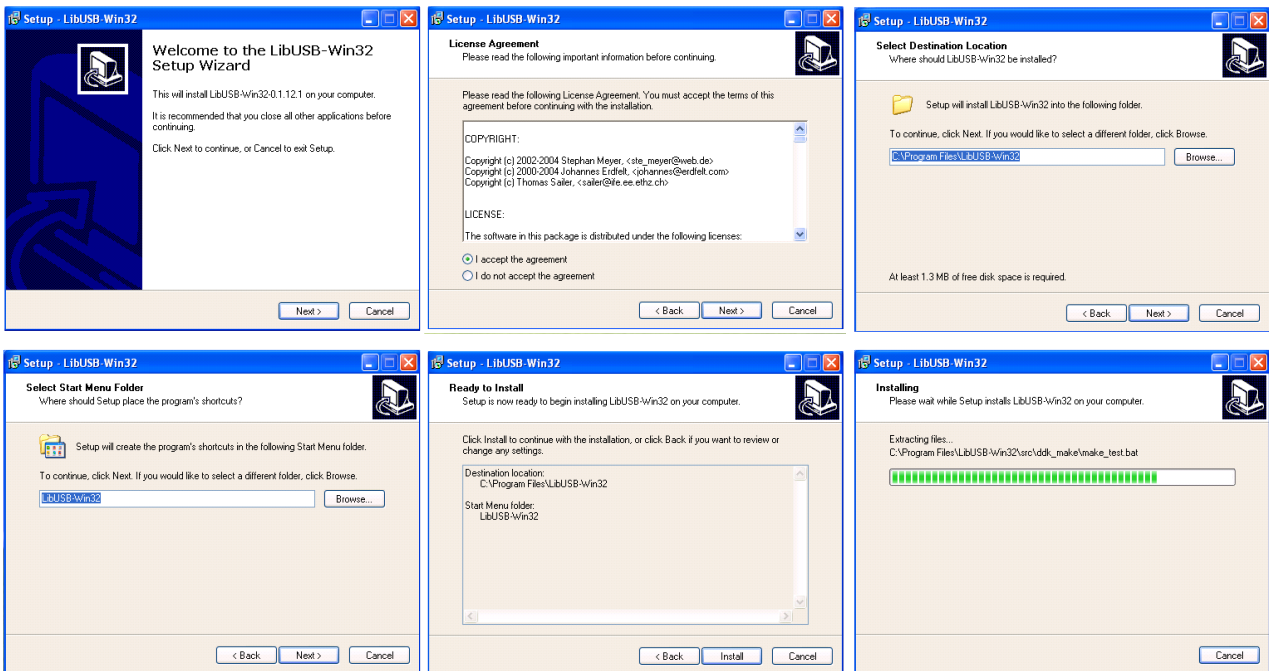
Package	Version	Key features
<a href="#">Windows XP Installation Guide (pdf) <i>(read first!)</i></a>	1.0.2	
 <a href="#">NR Programmer Windows XP Installation 1.0.2 (zip)</a>		



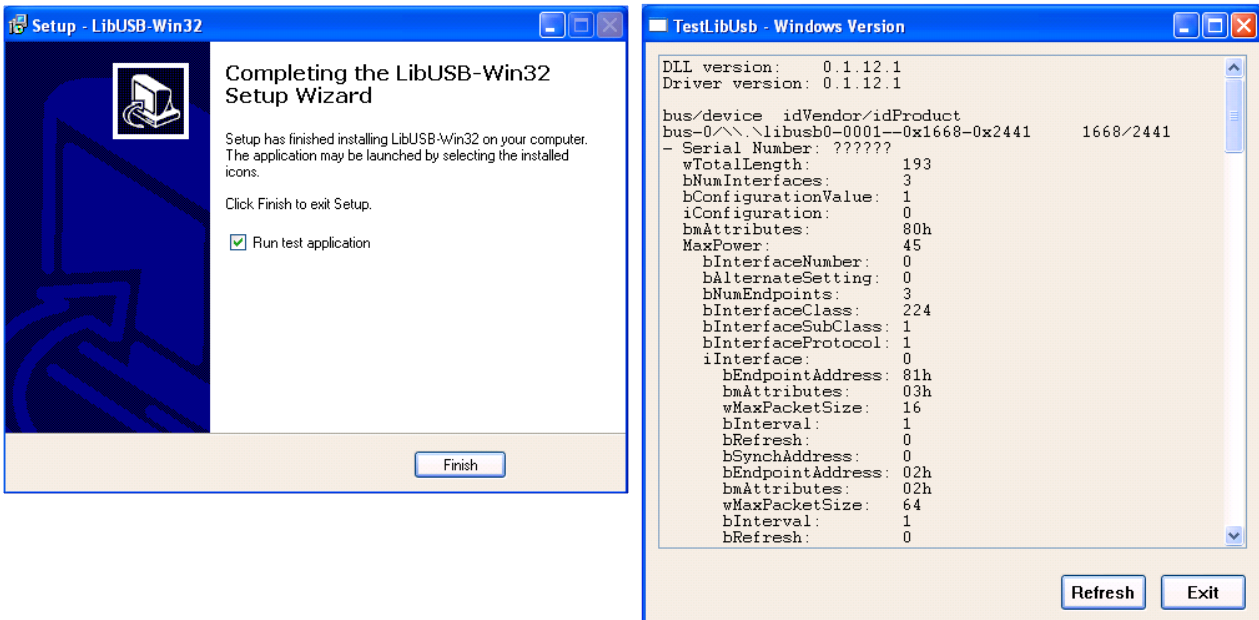
The installer starts by downloading all NR Programmer application.



Next the open source LibUSB-Win USB driver is installed. Allow all default directories and file names.



At the conclusion of the LibUSB-Win USB driver installation there will be the opportunity to run a test program to ensure it installed properly. Running this is optional.



At the conclusion you will be asked to restart Windows again. This is not needed.

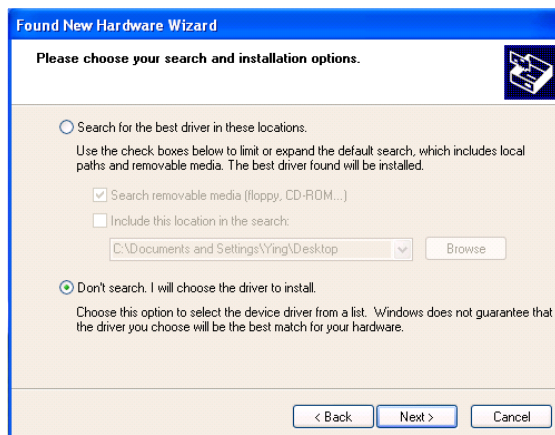
## 1.2. Plugging in the NR Programmer

When the driver is installed and the NR Programmer plugged into a USB port for the first time, the "Found New Hardware" wizard will appear.

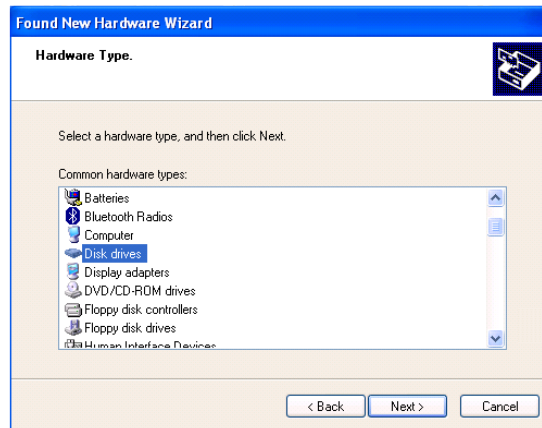
Select "Install from a list or specific location".



Select "Don't search. I will choose the driver to install".



Navigate to the hard disk.



Navigate to the install directory for NR Programmer eg `C:\Program Files\NRProgrammerInstaller_1.0.2.`



The Wizard will then find the driver setup file and start to link to the NR Programmer driver.



Installation is then complete. The PC can now talk to an NR Programmer and run the application from the Windows Start menu.

